

# ITINERARY - February Serengeti Safari - 10 Days

*Renee & Mitchel Kalmanson accompany all tours*

## Day 1

You will be transferred from Kilimanjaro Airport to Arusha, one way.

Accommodation will be at The African Tulip Hotel in a Deluxe Room on a Bed and Breakfast basis for 1 night.



**The African Tulip Hotel** is an elegant and charming boutique hotel located along Serengeti Road, right in the heart of Arusha. A warm and friendly welcome awaits guests who want to experience the best of Tanzanian hospitality. The hotel has been designed with safari travellers, families, honeymooners, and leisure travellers in mind. It has amenities of convenience whilst offering a high standard of accommodation.



The rooms are individually and stylishly decorated using warm African tones. A lot of African material and local art has been used throughout the hotel. The 20 deluxe rooms are all decorated with a safari theme, although the interior of each room is unique. There is a comfortable seating area and a desk in each room.



The Zanzibar lounge is beautifully decorated with Zanzibari art and offers comfortable seating where guests can relax and peruse the various coffee table books whilst enjoying pure African coffee. A fully-stocked lounge bar offers warm Swahili service.

The Baobab Restaurant is uniquely designed and offers a comfortable and enjoyable dining experience. The Chefs creatively prepare exotic and delicious meals with fresh and natural ingredients, giving guests a flavour of both Tanzanian and International cuisine.

### **The African Tulip Hotel includes the following:**

Accommodation on a bed and breakfast basis and tourism levy. Wifi usually available.

*Gratuities at your discretion - recommend \$5US/person/day.*

## Day 2

You will be met this morning by your driver/guide for the start of your safari – depart for Tarangire National Park.

### **Your lodge safari includes the following:**

Private spacious 4x4 safari vehicle with large windows, game viewing hatches, either fridge or cool-box for drinks, and inverter for charging batteries. All your fuels, vehicle entry fees and your game drives are included. Our guides are professionally trained and look forward to sharing their beautiful country with you.

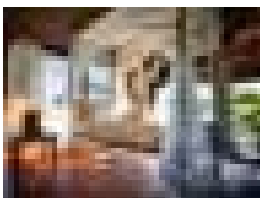
Bottled water will be supplied in your safari vehicle for the duration of your safari - 2L/person/day.

Enjoy a picnic lunch in Tarangire.

Accommodation will be at Tarangire River Camp in a Tent on a Full Board basis for 1 night.

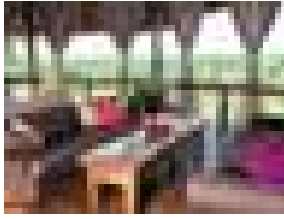


If you are looking for an authentic safari experience under traditional canvas, showcasing spectacular spacious views and enriching culture, **Tarangire River Camp**, where there is always a warm welcome and a wonderful atmosphere, is the perfect choice.



Tarangire River Camp is set within 25 000 hectares of concession area. Included on the land is a branch of the Tarangire River itself, which the camp overlooks. The property is in a great location for game viewing since it is only 3.5 kilometres from the main entrance to Tarangire National Park.

Traditional grass thatching adorns the roof of the main lodge structure, which is set off the ground on an elevated deck. The breezy lounge boasts ample seating in a relaxing open-air environment. The dining area, where culturally inspiring meals are served, consists of simple safari style seating and the



elevated position allows for excellent views over the riverbank below. Both the dining and lounge areas are married into a proper bonfire area and game viewing deck that also overlook the same stunning views. A smaller, secondary game viewing deck rises above the ceiling and offers a high, intimate perch above it all. The lodge's small, informal gift shop offers the families of the nearby Maasai villages a chance to sell some of their handmade wares.

Accommodation consists of spacious tents built on wooden platforms with a thatched roof, all of which are en-suite and tastefully furnished with all the comforts you will need whilst on safari. Each tent's generously proportioned private veranda open out onto stunning views of Mount Meru and Mount Kilimanjaro in the distant horizon and several of the tents also offer views of the river, which morphs to a dramatic sand bed in the dry season.

**Tarangire River Camp includes the following:**

Accommodation on a full board basis, Village Conservation Fees, and tourism levy.

*Gratuities at your discretion- recommend \$5US/person/day.*

**Day 3**

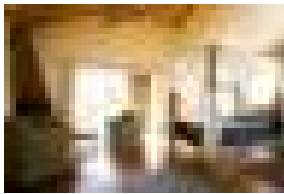
Depart for Lake Manyara National Park for game viewing – thereafter drive to Ngorongoro.

Accommodation will be at Ngorongoro Farm House or Tloma Lodge (sister property to Farm House with same amenities) in a Standard Chalet on a Full Board basis for 2 nights.



A small and exclusive lodge facing the Oldeani Volcano, only 5 kilometres from the Ngorongoro Lolduare gate, was built to offer clients an original experience reminiscent of the atmosphere of the old days.

**Ngorongoro Farm House** is built in the style of an old colonial farm and rustically decorated with local materials and full of details of good taste, with the purpose of offering clients an imaginary journey to the life of days gone by.



The main building, covered with an elegant thatched roof, contains the lounge, restaurant and a big deck which offers spectacular views of the Oldeani Volcano. The large vegetable garden and lower garden are perfect for a stroll and are the ideal places to take photos. Guests can enjoy excellent homemade cuisine using the dairy products and fresh vegetables produced by the farm all year round.



All the rooms are equipped with large beds, private verandas, walkways and telephones in the rooms. The rooms have en-suite bathrooms with showers, and all the beds have mosquito nets.

Meals are normally served in the main building and sometimes a buffet lunch is set up around the pool. Guests have an ample choice of food prepared with local produce and served in buffets.

**Ngorongoro Farm House/Tloma Lodge includes the following:**

Accommodation, three meals per day, tea and coffee and tourism levy. Wifi usually available.

*Gratuities at your discretion - recommend \$5US/person/day.*

**Day 4**

Today, after breakfast, head down into the Ngorongoro Caldera below and spend the rest of the day enjoying game viewing in one of the most spectacular places on earth! Photographic opportunities are abundant, and one often sees four of the Big Five in a short time. Have a picnic lunch at the floor of the crater at a pleasant lakeside location where you can stretch your legs and soak up the magnificent scenery.

**Days 5-7**

En-route to Ndutu this morning, stop off at Olduvai Gorge for a visit. Three Days of Safari in Ngorongoro Conservation Area along the border of the Southern Serengeti. Safari vehicles are able to "Off Road" for unique safari game viewing.

Accommodation will be at Ndutu Wilderness Camp in a Tent on a Full Board basis for 3 nights.



**Ndotu Wilderness Camp** is a "seasonal" intimate, comfortable camp available in the Ndotu area of the Serengeti ecosystem typically from December to March, which coincides with the "calving season". It is placed in a private site, in the heart of Ndotu plains - nestled under shady trees.

The camp comprises of just ten spacious tents, all with en-suite facilities, solar lighting, and eco-friendly flush toilet and shower. Comfortable beds with proper linen ensure a good night's rest.



The professional staff will be on hand to look after your every need, and the safari chef will prepare wholesome and varied meals during your stay at the camp. Meals are served in a large mess tent and the communal lounge and bar area is a great place to relax in the cool evenings.

**Ndotu Wilderness Camp includes the following:**

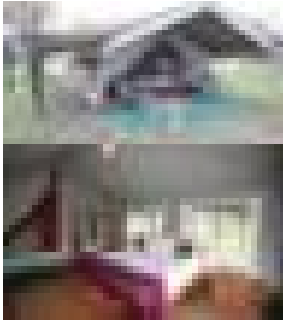
Accommodation on a full board basis, all snacks, bottled mineral water for drinking purposes only, and coffee and tea available throughout the day.

*Gratuities at your discretion - recommend \$5US/person/day.*

**Days 8-9**

After breakfast, depart for central Serengeti. Two days of safari in Central Serengeti.

Accommodation will be at Serengeti Wilderness Camp in a Tent on a Full Board basis for 2 nights.



**Serengeti Wilderness Camp** is a permanent camp located in the heart of the Serengeti National Park. The style of camp is simple but with every comfort taken care of.

Seasonal camps have the benefit of being able to move to some of the best game viewing areas of the park and every three to six months the camp is moved to a new location. The camp works under Park's guidelines and is truly eco-friendly.

Comprising just ten spacious tents, comfortable beds and quality linen are provided, with en-suite eco-friendly flushing toilets and bush shower off an intimate dressing area. Lighting is by 12-volt (solar powered) with bedside lamps provided. The tents each have a shady veranda, where guests may relax and read quietly or perhaps watch birds and animals.



A large, airy central dining tent complements the comfortable lounge tent which has a small reference library, maps, games for children, and a recharging facility for cameras and videos. The safari chef will prepare sumptuous meals for your enjoyment and special dietary requirements are taken care of. The camp also has a typical safari campfire in the evenings for guests to enjoy sundowners and snacks, and relive the day's experiences.



The staff will look after your every need, and will be on attendance virtually around the clock! A friendly, intimate, quality tented bush camp is offered, with good facilities in an amazing area, with due respect for this fragile ecosystem.

**Serengeti Wilderness Camp includes the following:**

Accommodation on a full board basis, all snacks, bottled mineral water for drinking purposes only, and coffee and tea available throughout the day.

*Gratuities at your discretion - recommend \$5US/person/day.*

**Day 10**

Return to Arusha by road (included) or optional flight (see below cost) and transfer to Kilimanjaro Airport for your departure.

**END OF SERVICES**

Please find below quotation for the above. Please note that all rates are based on per person sharing in USD.

	2 Guests	4 Guests	6-8 Guests	10-15 Guests	15-18 Guests
Rate Per Person Sharing	\$6,480.00	\$5,175.00	\$3,865.00	\$3,500.00	\$3,500.00
Single Supplement	\$1,250.00	\$1,250.00	\$1,000.00	\$1,000.00	\$1,000.00
Park/Camp Fees	\$800.00	\$800.00	\$800.00	\$800.00	\$800.00
Balloon Ride (Optional)	\$550.00pp	\$550.00pp	\$550.00pp	\$550.00pp	\$550.00pp
Airfare - Serengeti to JRO (Optional)	\$250.00pp	\$250.00pp	\$250.00pp	\$250.00pp	\$250.00pp
# of Vehicles	1	1	2	2-3	3-4

**INCLUSIONS AND EXCLUSIONS:**

**Package includes:**

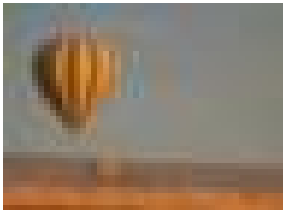
- Transfers and 4x4 transportation as stipulated in itinerary
- Accommodation and meals as specified in itinerary on safari
- Ngorongoro crater visit
- Olduvai Gorge visit
- Park/camp fees (*cost shown separately above*)
- Compulsory travel insurance

**Package excludes:**

- International flights & taxes
- Visas (if required)
- Health requirements
- Tips
- All items of a personal nature and any service not specified

**Here are some optional extra services that you can book in addition to your itinerary:**

**Seronera Balloon Safari**



Experience **Serengeti Balloon Safaris** in a romantic and evocative way as you gracefully fly over the wilderness of East Africa, often teeming with wildlife in the early morning. The balloon safari starts at 06h00 and lasts for around one hour, during which you will see the magnificent wildlife below over several square kilometres of the game park. The balloon flight is followed by a sumptuous champagne breakfast in the bush, ending your safari and creating a lasting memory of your morning's experience.

**Including:**

Transfers from your lodge / campsite to the launch site, balloon flight (approximately 1 hour), champagne and full English breakfast in the bush.

**One way flight**

Seronera (Central Serengeti) to Arusha Airport or Kilimanjaro Airport on Auric Air

**IMPORTANT NOTES:**

- Prices are subject to change without prior notification due to circumstances beyond our control, namely fuel surcharges, supplier increases, government taxes, exchange rate fluctuations, etc. The full booking value will be subject to rate of exchange fluctuations until full payment has been made.
- All flight costs, where applicable, are based on the lowest fare class and are subject to availability at time of booking, and can only be guaranteed once paid for.
- Airport taxes can only be confirmed at time of booking due to exchange rate fluctuations and may change the costs accordingly.
- Should any details change, we reserve the right to recalculate the tour price accordingly.
- All Vehicles are NON-SMOKING.

**Photos from Previous Safaris - ©Featuring Animals:**

